

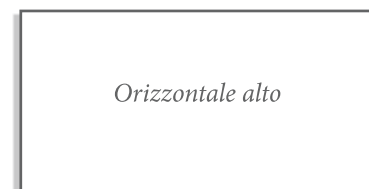
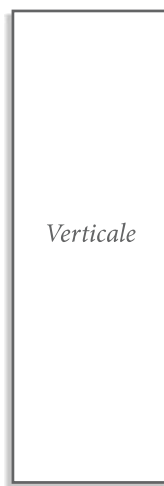
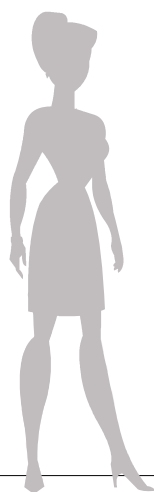


# Model Miljø

**VARME**  
**KILDEN**  
RADIANT PLATES SINCE 2005



## Model **Miljø**



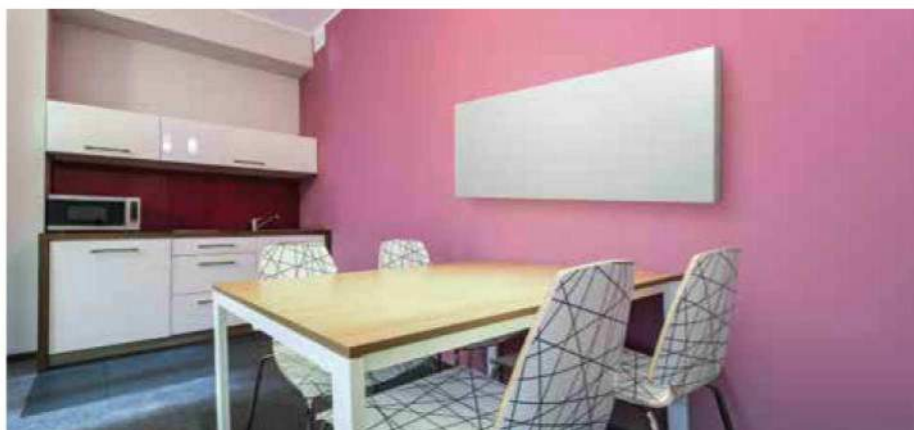
***Miljø minimal design ensures a perfect match with all furnishings.***

*The MILJØ radiating plates created by Varme Kilden® have a smooth surface and perfectly perpendicular sides to the wall. It is the most advanced and innovative product on the market nowadays. The perfect synthesis between efficiency and aesthetic elegance, thousands of models have now been installed. Once fitted to the wall, its gauge will not be more than 50 mm, for standard 1/2 joints/couplings.*

> Recovery of space thanks to Miljø ..



*MILJØ  
is the essence  
of aesthetic minimalism.  
Thanks to its  
clean shape i  
t is suitable for  
any kind of interior.*



> Space recovered with Miljø Horizontal half-height.

## Technical features

**Ready for:** valves and holders 1/2" positioned on the inside of the back, according to the exclusive Varme Kilden®.

**Thermostatic valve with preset control:** built-in manifold, supplied as standard.

**Pressure:** max 6 Bar

**Maximum temperature:** not more than 100 °C, although the temperature recommended should be between 40°C (for heating pumps) and 50°C (for condensation boilers). The plates work as well with traditional radiators at temperatures between 65°C and 75°C

**Wall's anchoring:** There are two versions for wall fitting depending on vertical or horizontal placement, with a special system allowing quick dismantling in case of ordinary or extraordinary maintenance of the walls. Equipped with wall fastening brackets, lower security and a special cap for the air vent.

**Packaging:** hard paperboard, polystyrene and shrink-wrapped sheets.

**Recyclability of the product:** 100%

**Whether of MILJØ plate:** be it installed vertically or horizontally, the size will be the same. In case of horizontal placing, the width will coincide with the vertical encumbrance, while the height will coincide with the horizontal encumbrance.

**Example:** one plate of 400mm width and 1400mm height, to be vertically installed will be VK4/1400-V. One plate 700mm wide and 2000mm long to be horizontally installed will be VK7/2000-H.

# Models, amount of space and radiating

The dimensions of the product can be slightly modified,  
we suggest you check the exact measurements stated in the acknowledgment of your order.

## MODELS & RADIATING SURFACE - MILJØ



1	2	3	4	5	6	7	8
VK3	VK4	VK5	VK6	VK7	VK8	VK9	VK10

### WIDTH

HEIGHT

	300 mm	400 mm	500 mm	600 mm	700 mm	800 mm	900 mm	1000 mm
<b>400 mm</b>	0,12 m <sup>2</sup>	0,16 m <sup>2</sup>	0,20 m <sup>2</sup>	0,24 m <sup>2</sup>	0,28 m <sup>2</sup>	0,32 m <sup>2</sup>	0,36 m <sup>2</sup>	0,40 m <sup>2</sup>
<b>600 mm</b>	0,18 m <sup>2</sup>	0,24 m <sup>2</sup>	0,30 m <sup>2</sup>	0,36 m <sup>2</sup>	0,42 m <sup>2</sup>	0,48 m <sup>2</sup>	0,54 m <sup>2</sup>	0,60 m <sup>2</sup>
<b>800 mm</b>	0,24 m <sup>2</sup>	0,32 m <sup>2</sup>	0,40 m <sup>2</sup>	0,48 m <sup>2</sup>	0,56 m <sup>2</sup>	0,64 m <sup>2</sup>	0,72 m <sup>2</sup>	0,80 m <sup>2</sup>
<b>900 mm</b>	0,27 m <sup>2</sup>	0,36 m <sup>2</sup>	0,45 m <sup>2</sup>	0,54 m <sup>2</sup>	0,63 m <sup>2</sup>	0,72 m <sup>2</sup>	0,81 m <sup>2</sup>	0,90 m <sup>2</sup>
<b>1000 mm</b>	0,30 m <sup>2</sup>	0,40 m <sup>2</sup>	0,50 m <sup>2</sup>	0,60 m <sup>2</sup>	0,70 m <sup>2</sup>	0,80 m <sup>2</sup>	0,90 m <sup>2</sup>	1,00 m <sup>2</sup>
<b>1100 mm</b>	0,33 m <sup>2</sup>	0,44 m <sup>2</sup>	0,55 m <sup>2</sup>	0,66 m <sup>2</sup>	0,77 m <sup>2</sup>	0,88 m <sup>2</sup>	0,99 m <sup>2</sup>	1,10 m <sup>2</sup>
<b>1200 mm</b>	0,36 m <sup>2</sup>	0,48 m <sup>2</sup>	0,60 m <sup>2</sup>	0,72 m <sup>2</sup>	0,84 m <sup>2</sup>	0,96 m <sup>2</sup>	1,08 m <sup>2</sup>	1,20 m <sup>2</sup>
<b>1400 mm</b>	0,42 m <sup>2</sup>	0,56 m <sup>2</sup>	0,70 m <sup>2</sup>	0,84 m <sup>2</sup>	0,98 m <sup>2</sup>	1,12 m <sup>2</sup>	1,26 m <sup>2</sup>	1,40 m <sup>2</sup>
<b>1600 mm</b>	0,48 m <sup>2</sup>	0,64 m <sup>2</sup>	0,80 m <sup>2</sup>	0,96 m <sup>2</sup>	1,12 m <sup>2</sup>	1,28 m <sup>2</sup>	1,44 m <sup>2</sup>	1,60 m <sup>2</sup>
<b>1800 mm</b>	0,54 m <sup>2</sup>	0,72 m <sup>2</sup>	0,90 m <sup>2</sup>	1,08 m <sup>2</sup>	1,26 m <sup>2</sup>	1,44 m <sup>2</sup>	1,62 m <sup>2</sup>	1,80 m <sup>2</sup>
<b>1900 mm</b>	0,57 m <sup>2</sup>	0,76 m <sup>2</sup>	0,95 m <sup>2</sup>	1,14 m <sup>2</sup>	1,33 m <sup>2</sup>	1,52 m <sup>2</sup>	1,71 m <sup>2</sup>	1,90 m <sup>2</sup>
<b>2000 mm</b>	0,60 m <sup>2</sup>	0,80 m <sup>2</sup>	1,00 m <sup>2</sup>	1,20 m <sup>2</sup>	1,40 m <sup>2</sup>	1,60 m <sup>2</sup>	1,80 m <sup>2</sup>	2,00 m <sup>2</sup>
<b>2200 mm</b>	0,66 m <sup>2</sup>	0,88 m <sup>2</sup>	1,10 m <sup>2</sup>	1,32 m <sup>2</sup>	1,54 m <sup>2</sup>	1,76 m <sup>2</sup>	1,98 m <sup>2</sup>	
<b>2400 mm</b>	0,72 m <sup>2</sup>	0,96 m <sup>2</sup>	1,20 m <sup>2</sup>	1,44 m <sup>2</sup>	1,68 m <sup>2</sup>	1,92 m <sup>2</sup>		
<b>2600 mm</b>	0,78 m <sup>2</sup>	1,04 m <sup>2</sup>	1,30 m <sup>2</sup>	1,56 m <sup>2</sup>	1,82 m <sup>2</sup>			
<b>2800 mm</b>	0,84 m <sup>2</sup>	1,12 m <sup>2</sup>	1,40 m <sup>2</sup>	1,68 m <sup>2</sup>	1,96 m <sup>2</sup>			
<b>2900 mm</b>	0,87 m <sup>2</sup>	1,16 m <sup>2</sup>	1,45 m <sup>2</sup>	1,74 m <sup>2</sup>	2,03 m <sup>2</sup>			

Radiating surface

# Parameters for sizing

When designing and sizing the Varme Kilden's Radiating Plates, basic parameters in use in the technical normative are taken into consideration: place, exposure, dimension of the ambience, of the opaque and the transparent areas, adjacent ambiances, coefficient of thermal transmittance, walls stratigraphy, chosen water supply, temperature and more.

For your convenience, we hereby list all of the basic requirements to make a correct calculation for your offer:

1) Place where the house is built or will be built

---

2) A floor plan of the house to be sized with:

A) Dimension of the walls and rooms

B) Rooms height

C) Dimensions of the window

D) Room's exposure (specify the North side)

E) Thermal transmittance coefficient (W/m<sup>2</sup>K) of the walls, floors and ceilings; or walls stratigraphy or estimated building year. Specify if other walls have a different thermal transmittance coefficient.

F) Specify what kind of adjacent heated ambiances there are, other houses, garages, cellars, attics, stairwells and others.

---

3) Minimum water fueling temperature of the system we suggest 50+/- 5°C with condensation boilers, 42+/- 5°C with heating pumps and 65+/- 5°C with pellet functioning boilers or older boilers. Our products work on a temperature range between 35°C and 99°C.

---

4) Thermal transmittance coefficient (W/m<sup>2</sup>K) of doors and windows and their architectural features: material of the structures (wood, pvc or steel); kind of glass parts (single, double or triple, processed with special gases or processed for low emissions).

Many years of experience in the design and calculation of the radiating plates have helped and led us to create a special software that can easily calculate the minimum necessary radiating areas for the selection of the best Varme Kilden's plates.

The suggested calculations are approximate and can be changed, only if the minimum radiating area required is respected. Here below you can find an example taken from a real estimate, where you can check the accuracy of the choice: the products have a total amount of radiating surface that is more than the minimum required (please see the chart).

## esempio:

	Piano o sezione	Locale	Metri <sup>2</sup> necessari	Metri <sup>2</sup> piastre	Qtà	Modello piastra Varme Kilden®
1	Terra	Sala	3,50 m <sup>2</sup>	3,60 m <sup>2</sup>	2	Miljø 900x2000 - V
2	Terra	Cucina	1,03 m <sup>2</sup>	1,00 m <sup>2</sup>	1	Miljø 500x2000 - V
3	Terra	Bagno	0,50 m <sup>2</sup>	0,48 m <sup>2</sup>	1	Miljø 800x600 - H
4	Terra	Cameretta	1,06 m <sup>2</sup>	1,12 m <sup>2</sup>	1	Miljø 1600x700 - H
5	Terra	Studio	0,56 m <sup>2</sup>	0,56 m <sup>2</sup>	1	Miljø 800x700 - H
6	Terra	Camera	0,93 m <sup>2</sup>	0,98 m <sup>2</sup>	1	Miljø 1400x700 - H